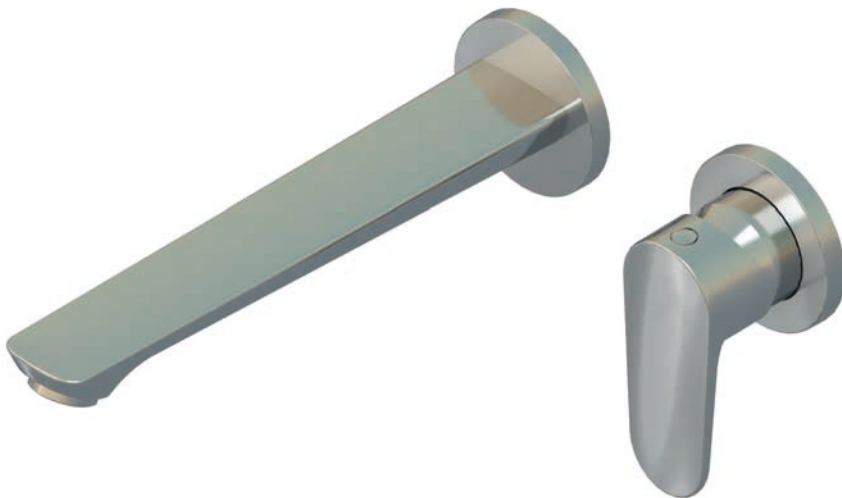


ViTec SL Basin Mixers

General
Instruction
Villeroy & Boch

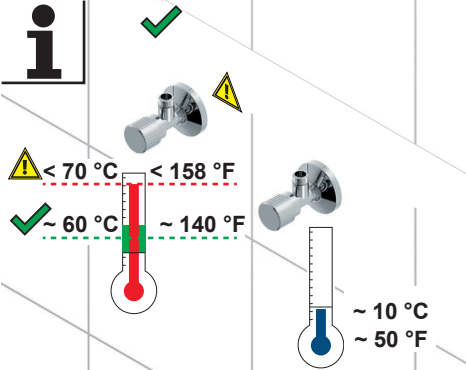


- | | | | |
|---------------------------------------|---------------------------------|---------------------------------|----------------------------------|
| DE Montageanleitung | AR دليل التركيب | HU Szerelési útmutató | PT Instruções de montagem |
| EN Installation instructions | BG Ръководство за монтаж | ID Petunjuk pemasangan | RO Manual de montaj |
| ES Instrucciones de montaje | CS Návod k montáži | JA 取付説明書 | SK Návod na montáž |
| FR Instructions de montage | DA Monteringsvejledning | KO 설치 가이드 | SL Navodila za montažo |
| IT Istruzioni per il montaggio | ET Paigaldusjuhend | LT Montavimo instrukcija | SV Monteringsanvisning |
| NL Montagehandleiding | EL Οδηγίες τοποθέτησης | LV Mont#žas instrukcija | TH คู่มือการติดตั้ง |
| RU Инструкция по монтажу | FI Asennusohje | NO Monteringsanvisning | TR Montaj kılavuzu |
| ZH 安装说明 | HR Uputa za montažu | PL Instrukcja monta'u | UK Інструкція з монтажу |





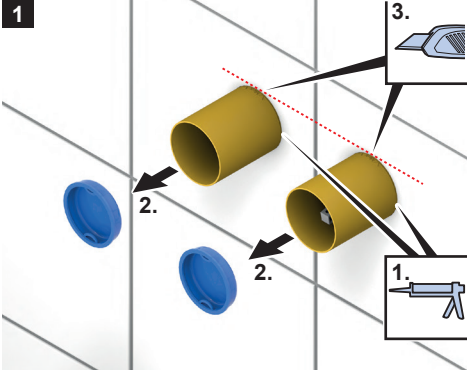
i



$\Delta < 70\text{ }^{\circ}\text{C}$ $< 158\text{ }^{\circ}\text{F}$
 $\checkmark \sim 60\text{ }^{\circ}\text{C}$ $\sim 140\text{ }^{\circ}\text{F}$

$\sim 10\text{ }^{\circ}\text{C}$
 $\sim 50\text{ }^{\circ}\text{F}$

1

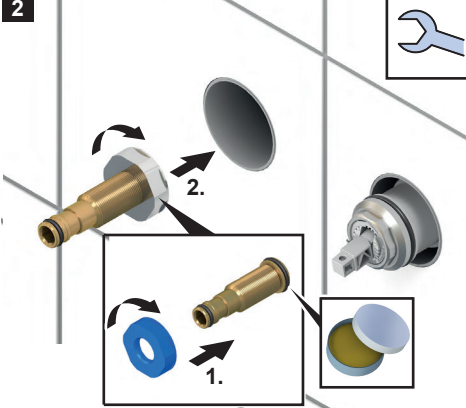


3.

2.

1.

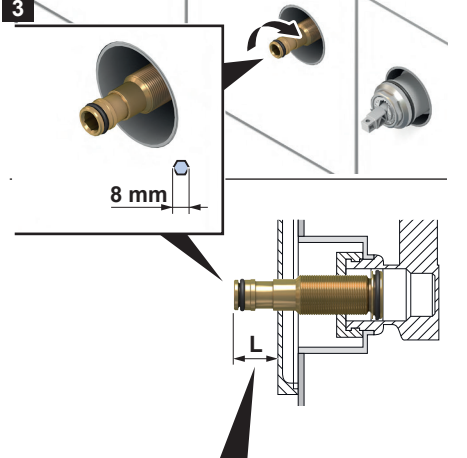
2



2.

1.

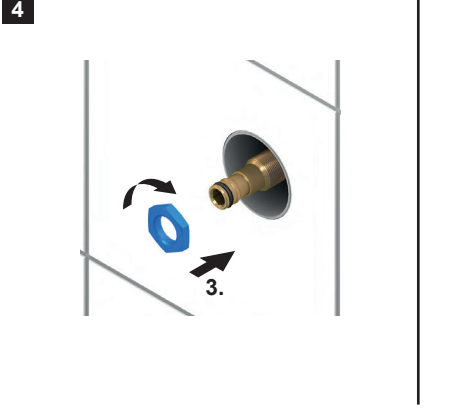
3



8 mm

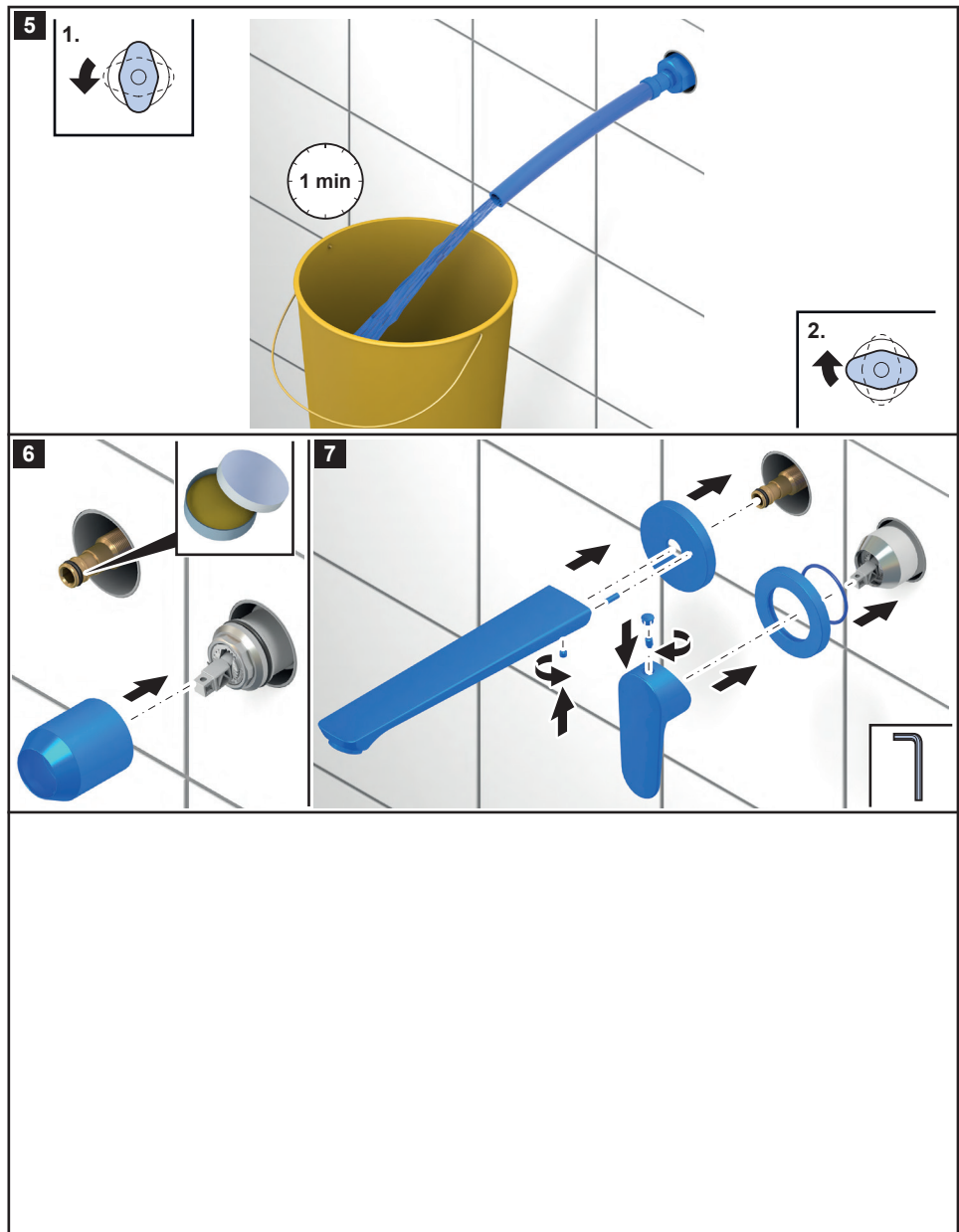
L

4

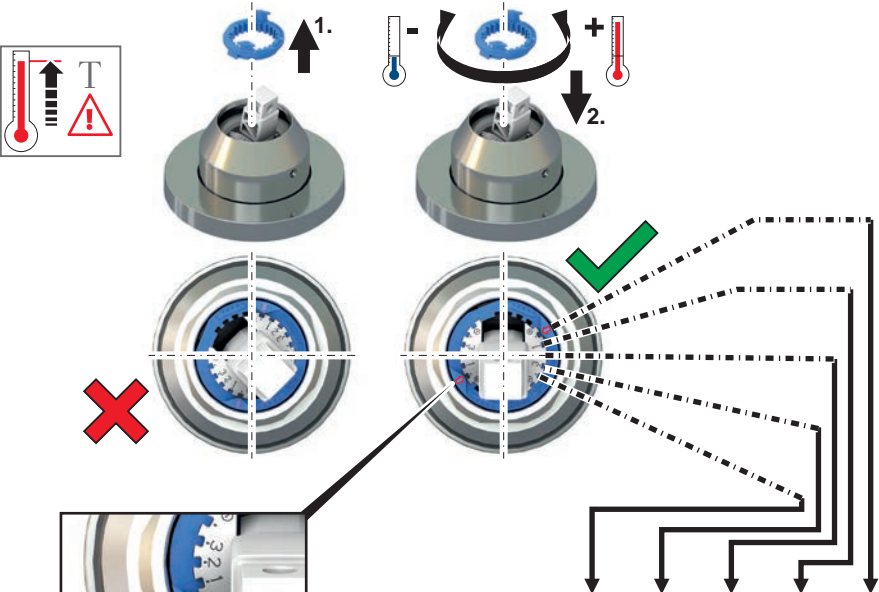


3.

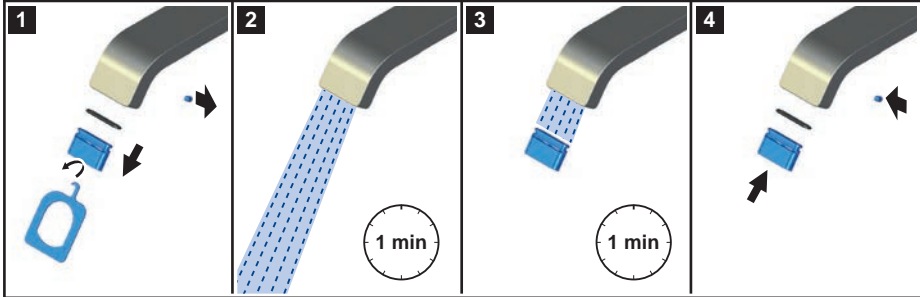
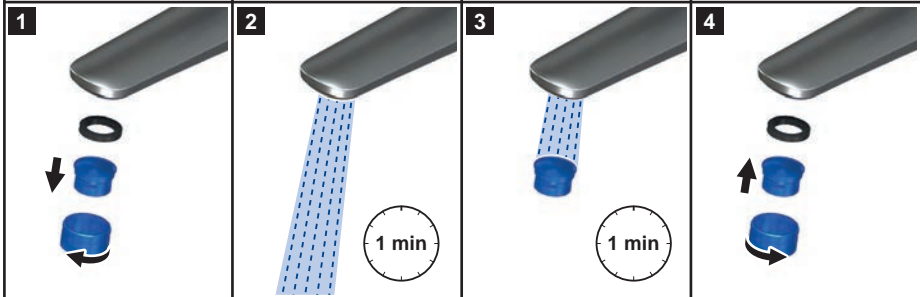
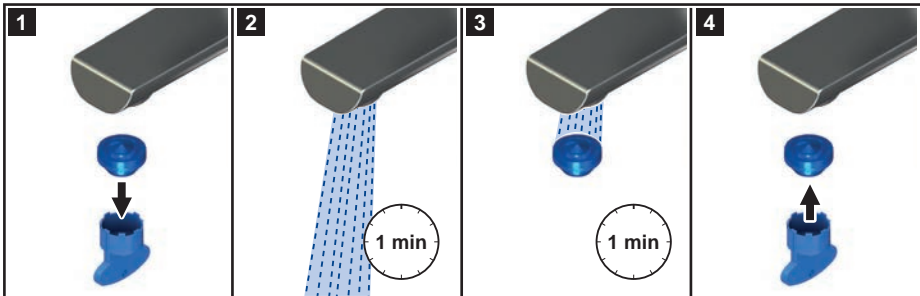
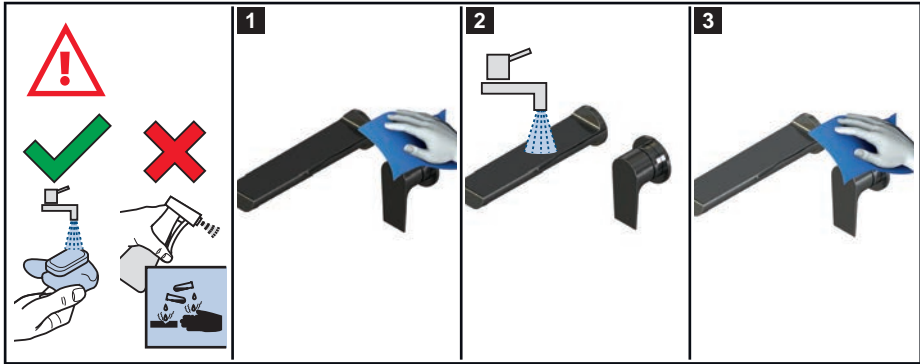
		L = Min. mm	L = Max. mm
A		18,5	20
B	TVW103112111	31,5	34
	TVW125003001	31,5	34
	TVW105112111	31,5	34



8



P	T		4	3	2	1	0
	50 °C	15 °C	°C	°C	°C	°C	°C
0,3 MPa	65 °C	15 °C	33	42	53	63	65
3 bar	85 °C	15 °C	41	53	68	83	85



VILLEROY & BOCH

GERMANY

Villeroy & Boch AG

Bathroom and Wellness Division

Headquarters

66693 Mettlach

Germany

Tel: +49 (0) 68 64 / 81 0

E-Mail: information@villeroy-boch.com