



HANSA

Installation and maintenance guide



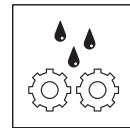
4, 18-19



5-13



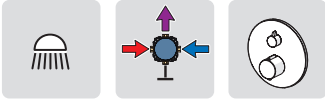
14-15



16-17

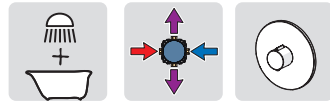
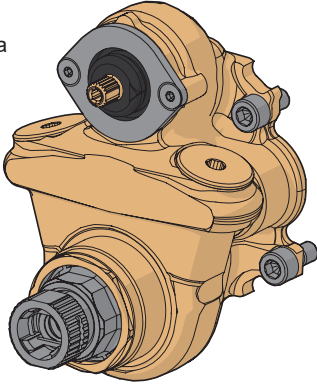


20



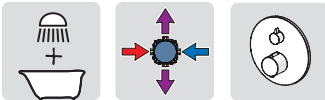
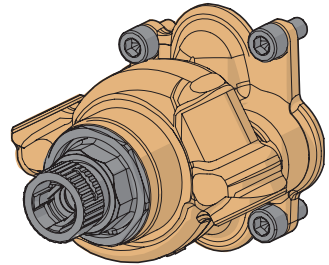
1017658V

EN 817
100 - 1000 kPa
max. +90°C



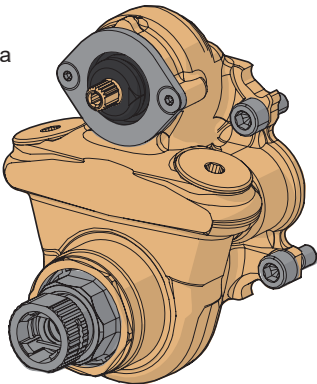
1018971V

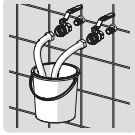
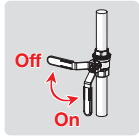
EN 817
100 - 1000 kPa
max. +90°C



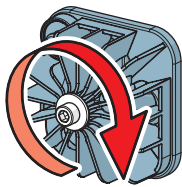
1019390V

EN 817
100 - 1000 kPa
max. +90°C

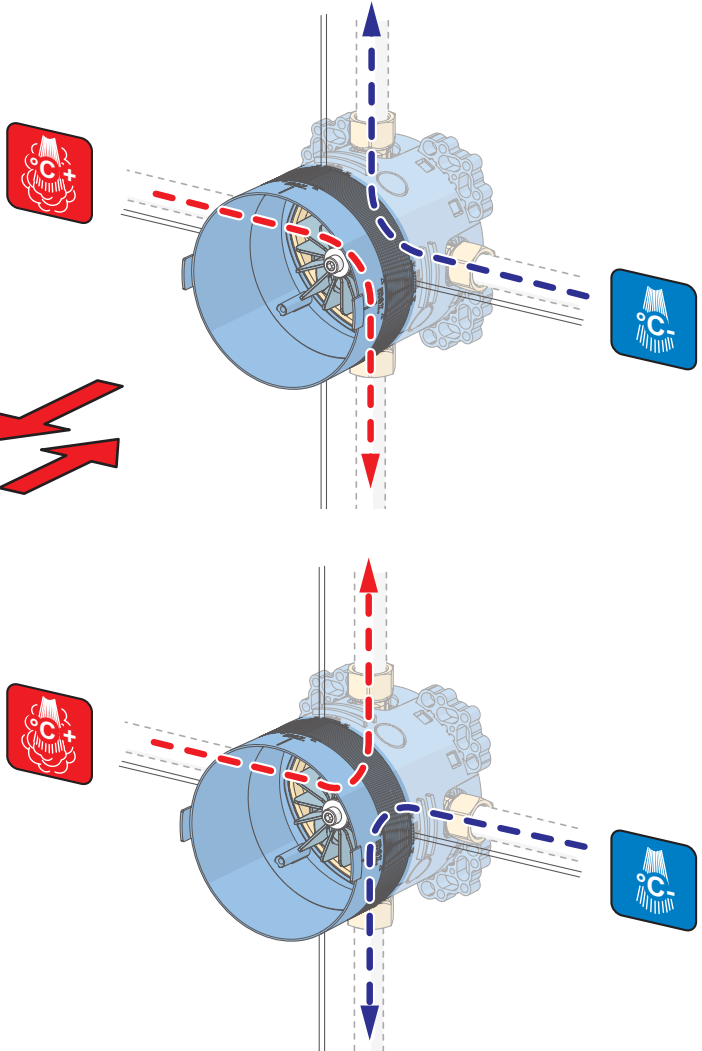




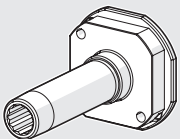
EN 1717
EN 806-5



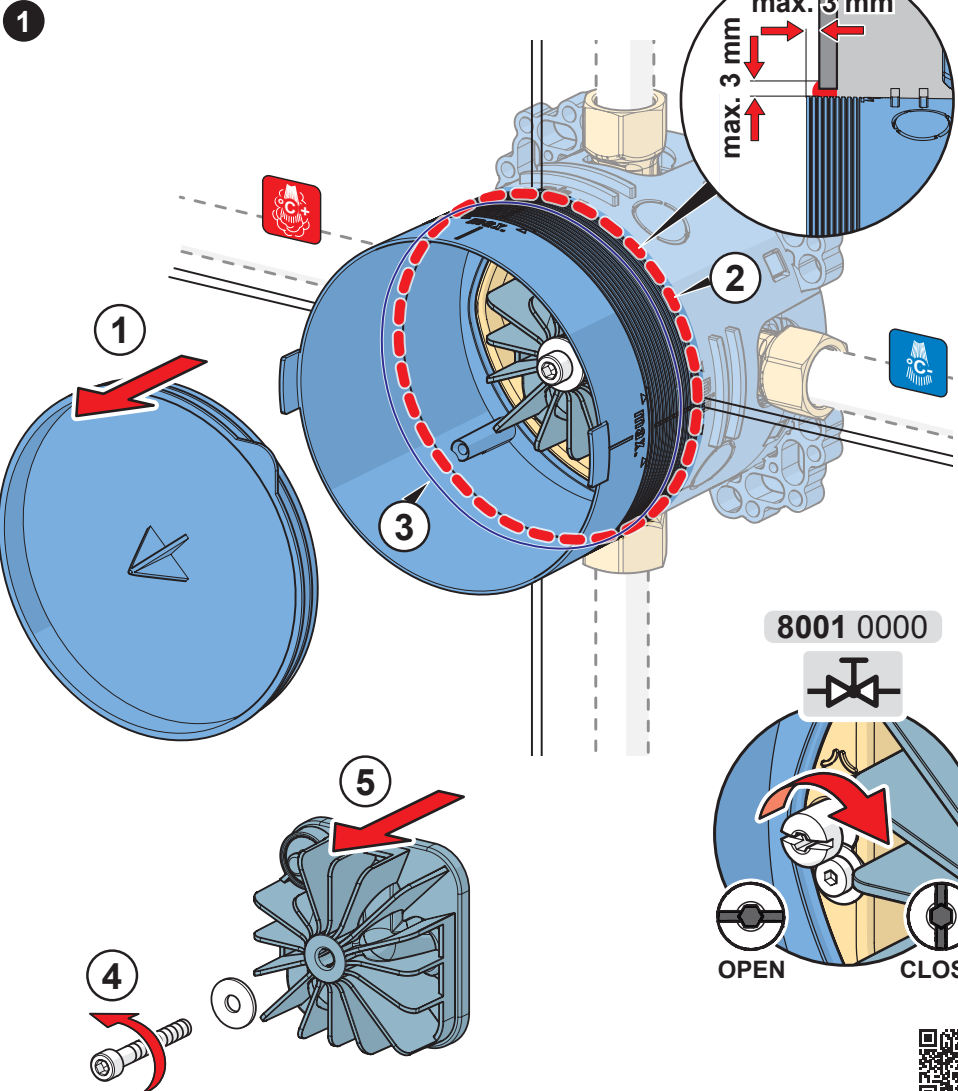
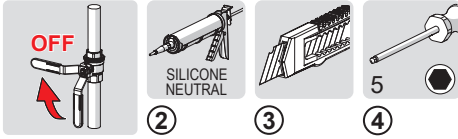
90°



59 914 185



Rinsing tube

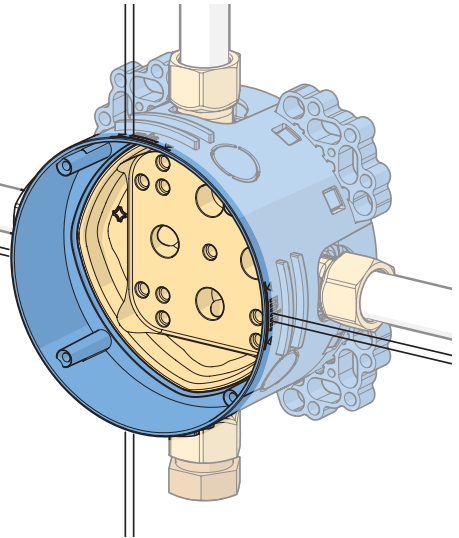
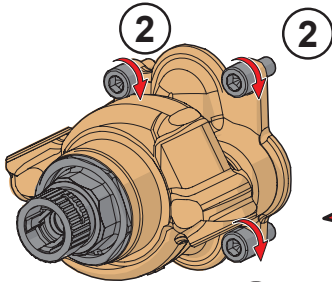
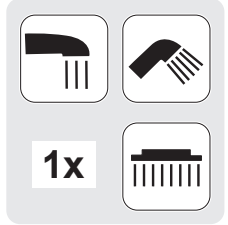
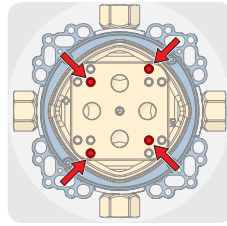
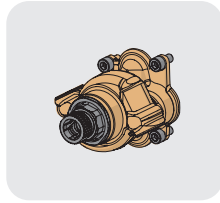




5

②

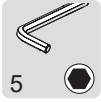
② A



②

max. 12 Nm



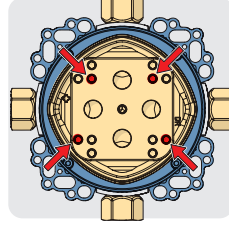
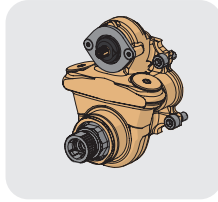


5

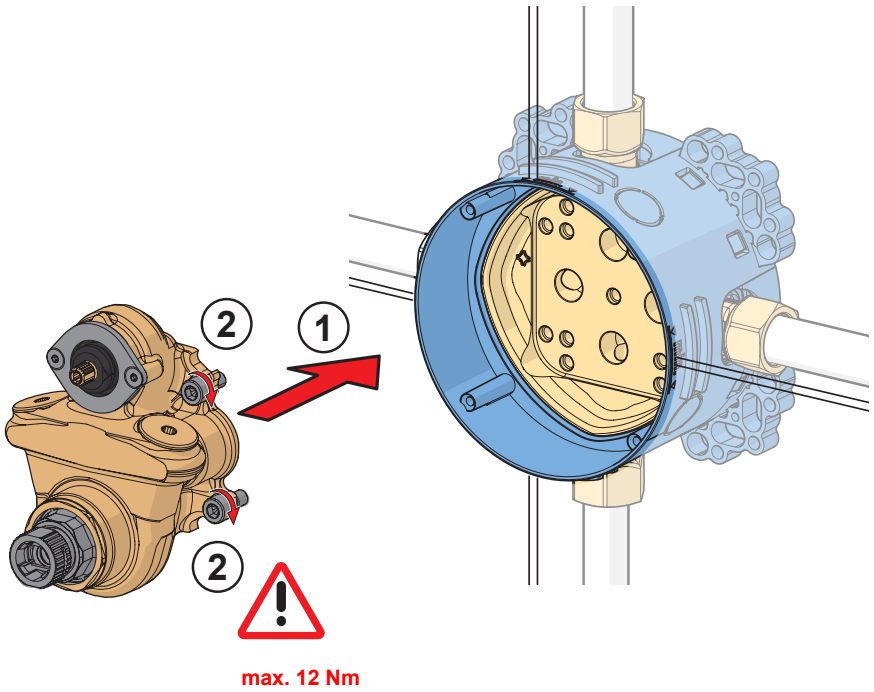
2

2

B

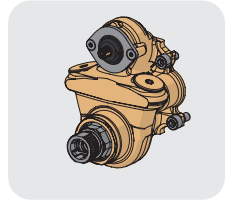
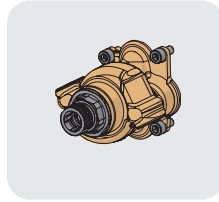


1-2x

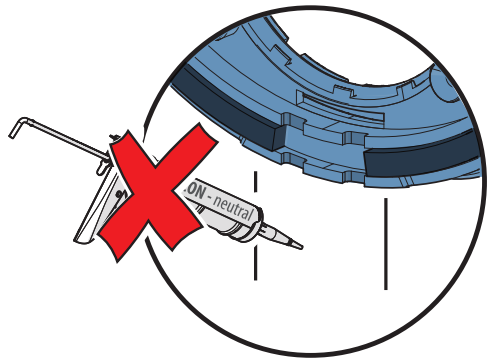
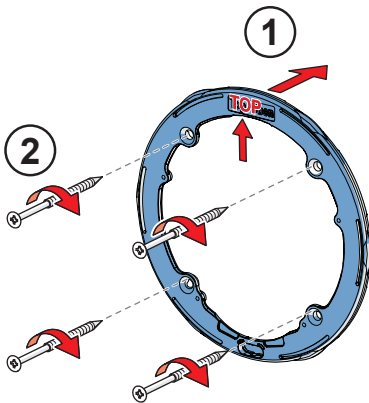
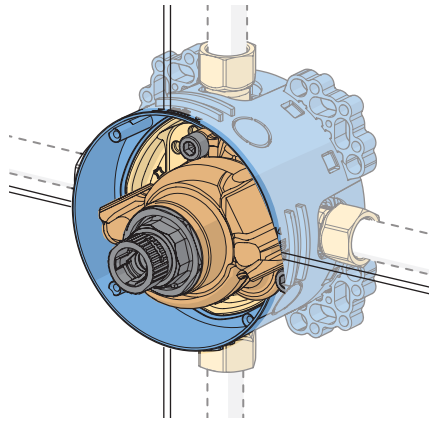


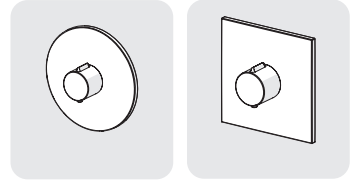
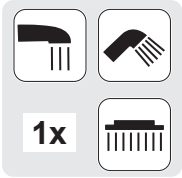


2

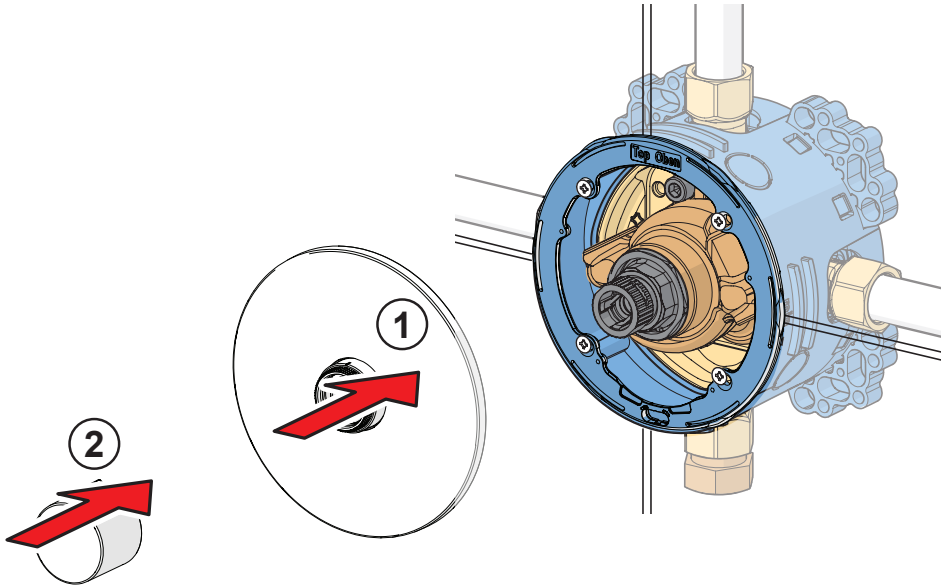


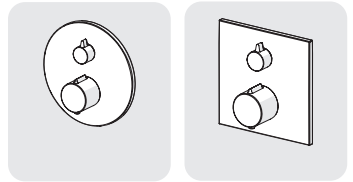
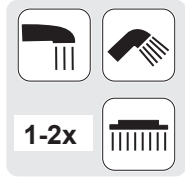
3



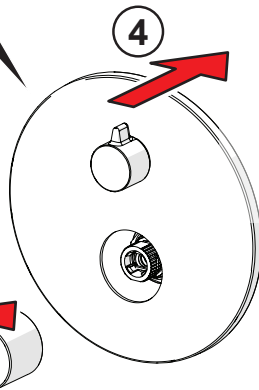
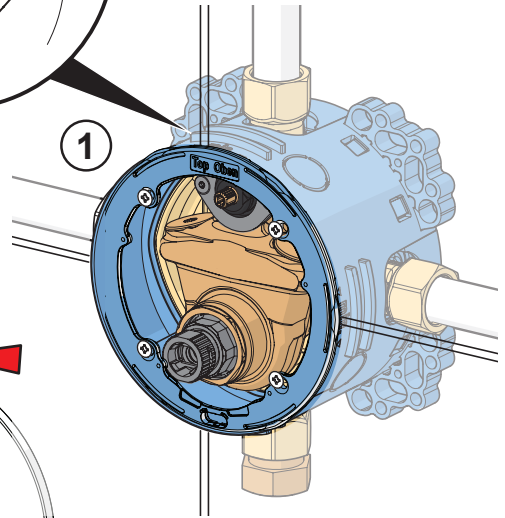
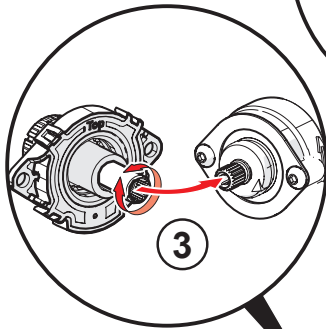
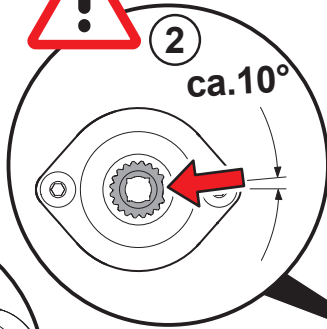


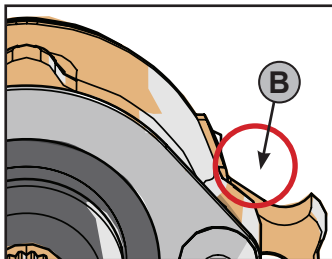
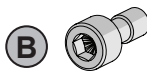
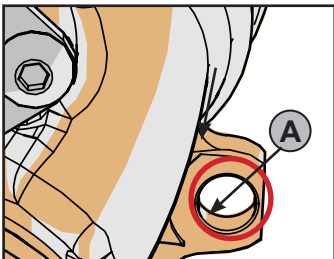
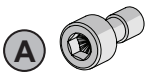
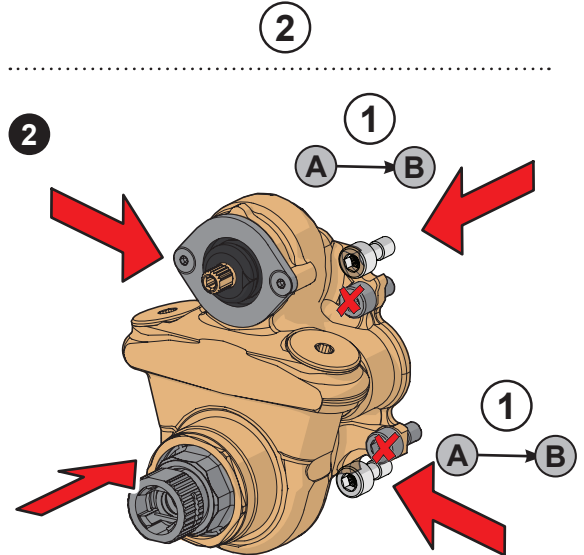
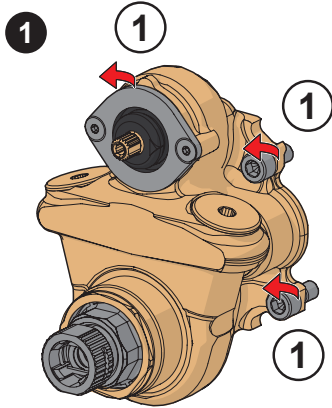
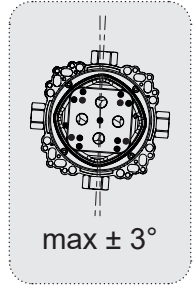
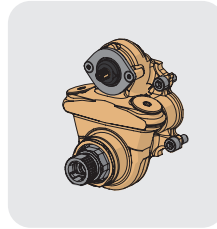
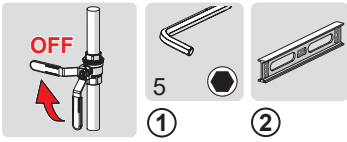
4 A





4 B

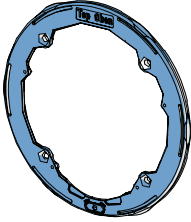




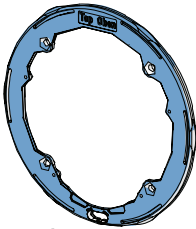


5

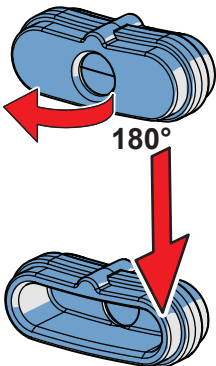
1



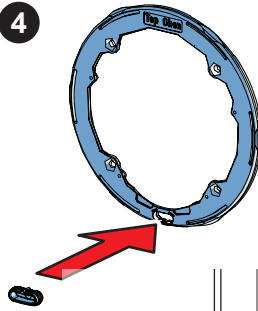
2



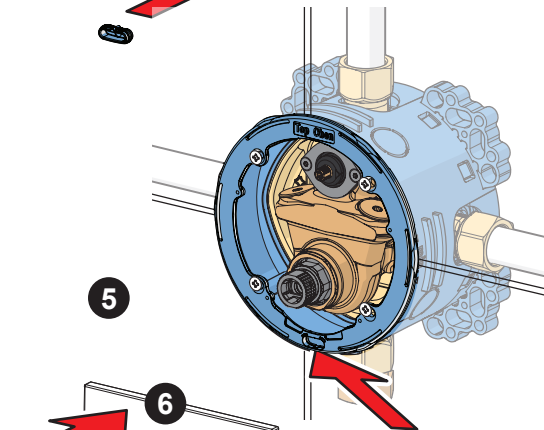
3



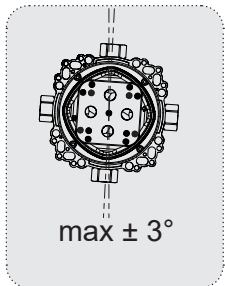
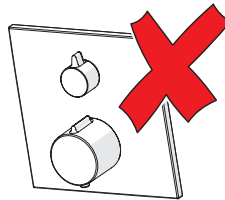
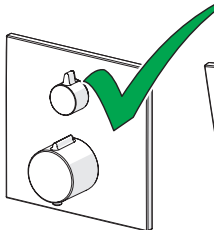
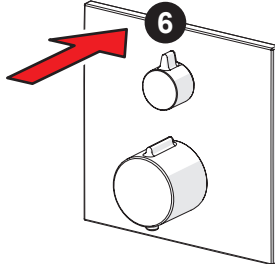
4

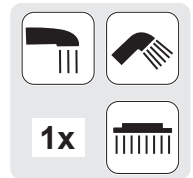
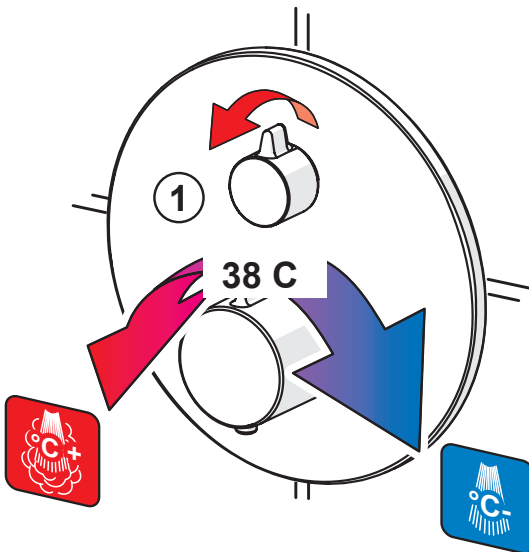
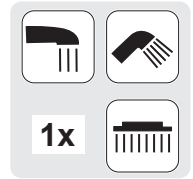
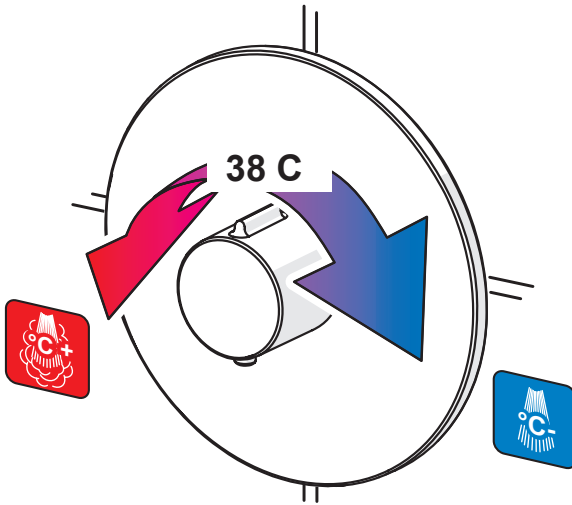


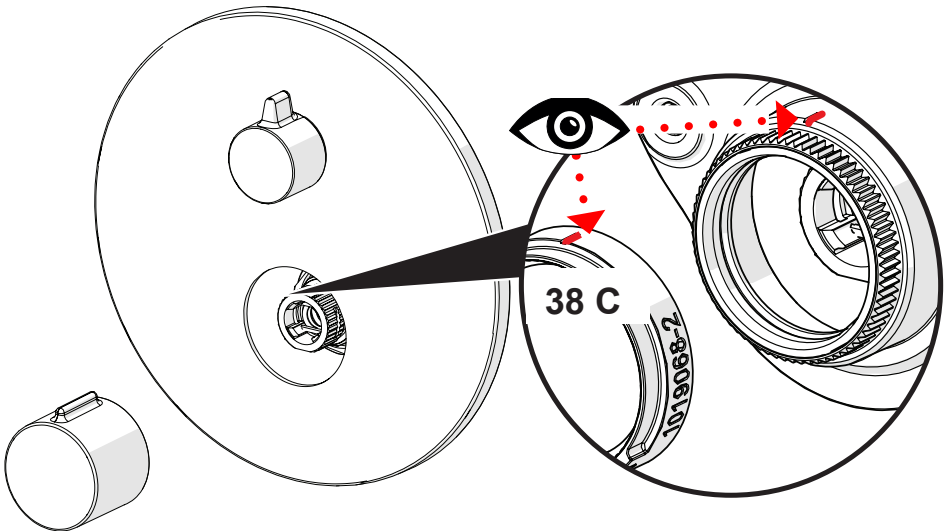
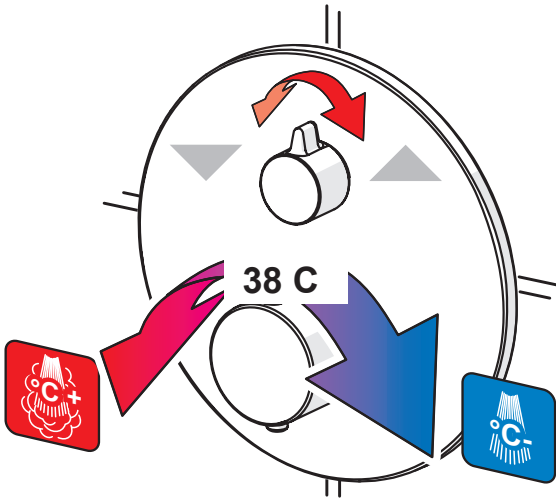
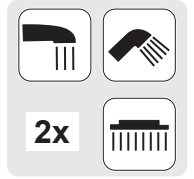
5

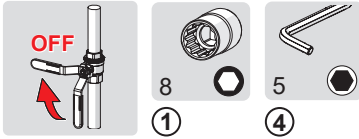


6

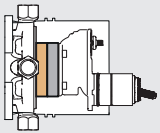




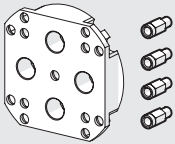




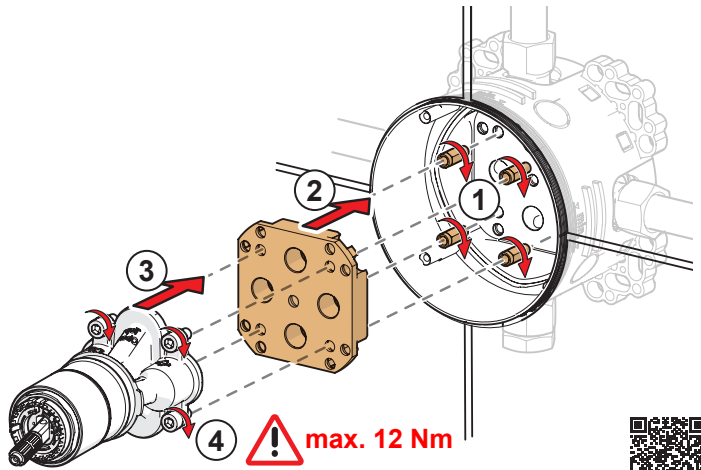
59 914 182



15 mm (max. 30 mm)

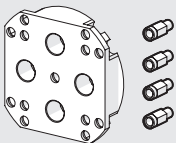


Extension set

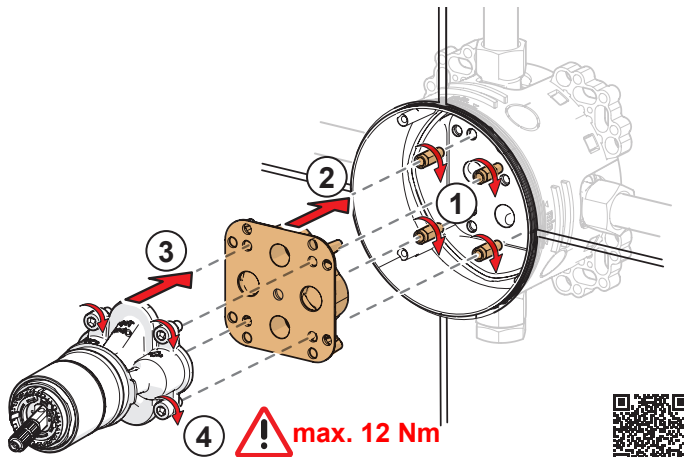


http://movie.hansa.com/blbx_trblshoot_extension

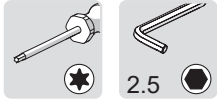
59 914 184



Reverse adapter

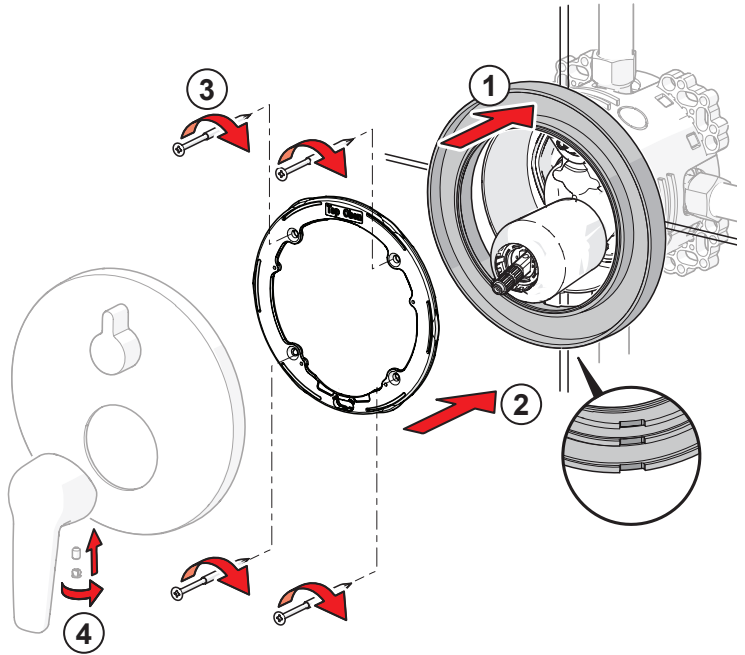


http://movie.hansa.com/blbx_trblshoot_warmcold

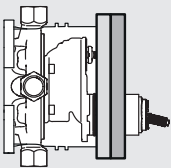


③

④



59 914 191

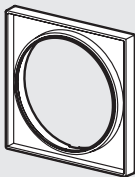


15 mm (max. 30 mm)



Distance adapter

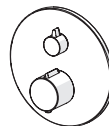
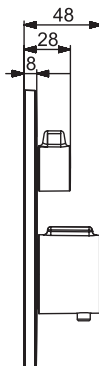
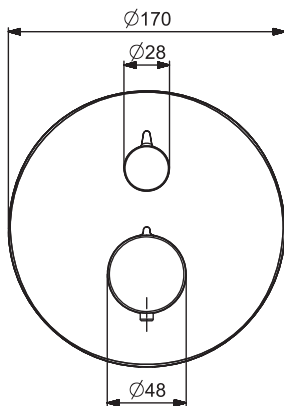
59 914 192





8861 9245

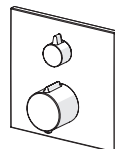
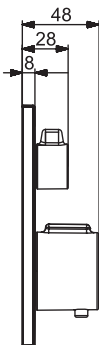
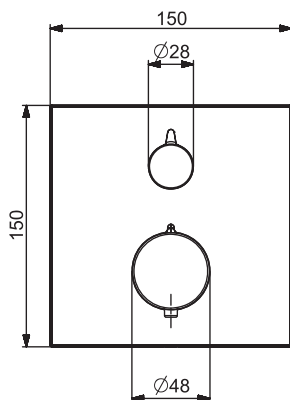
I (ISO 3822)
EN 1111
100 - 1000 kPa
0.33 l/s (300 kPa)
max. +80°C



mpi.hansa.com/88619245

8113 9262

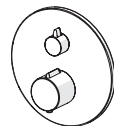
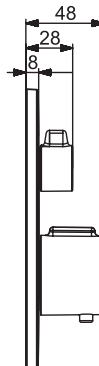
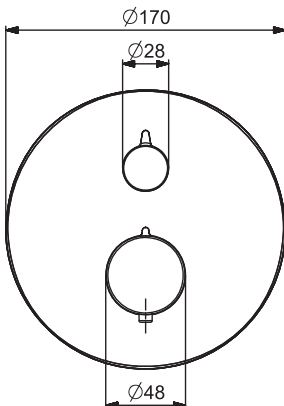
I (ISO 3822)
EN 1111
100 - 1000 kPa
0.33 l/s (300 kPa)
max. +80°C



mpi.hansa.com/81139262

8862 9245

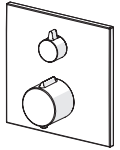
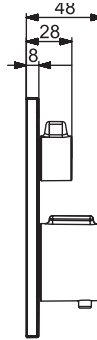
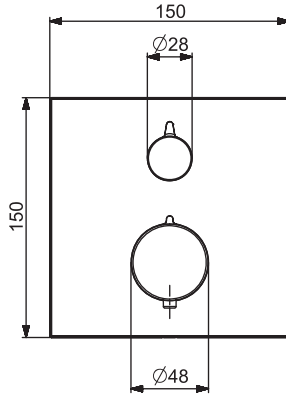
I (ISO 3822)
EN 1111
100 - 1000 kPa
0.32 / 0.28 l/s (300 kPa)
max. +80°C



mpi.hansa.com/88629245

**8114 9262**

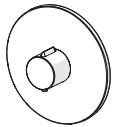
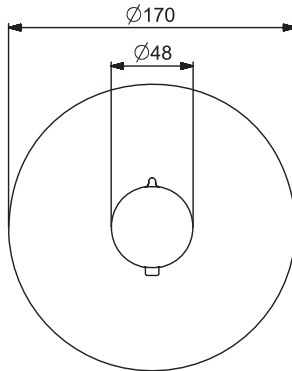
I (ISO 3822)
EN 1111
100 - 1000 kPa
0.32 / 0.28 l/s (300 kPa)
max. +80°C



mpi.hansa.com/81149262

8860 9245

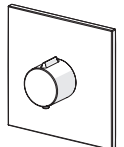
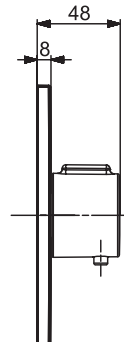
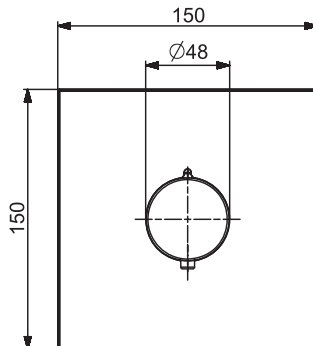
I (ISO 3822)
EN 1111
100 - 1000 kPa
0.33 l/s (300 kPa)
max. +80°C



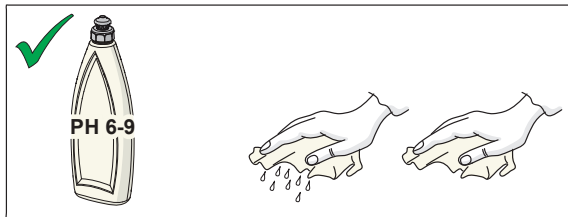
mpi.hansa.com/88609245

8112 9273

I (ISO 3822)
EN 1111
100 - 1000 kPa
0.33 l/s (300 kPa)
max. +80°C



mpi.hansa.com/81129273



cleaning.hansa.com

About Oras Group

Oras Group is a significant European provider of sanitary fittings: the market leader in the Nordics and a leading company in Continental Europe.

The company's mission is to create the smartest water experiences for everyone and its vision is to become the Perfect Flow Company.

The Group has two strong brands, Oras and Hansa. Oras Group is owned by Oras Invest, a family company, and an industrial owner.

The domicile of Oras Ltd, the parent company of the Group, is located in Rauma, Finland, and the Group has two manufacturing sites: Olesno (Poland) and Rauma (Finland).

The Group operates with its own staff in 17 markets. Oras Group's net sales were 233.5 million euros in 2021 and at the end of the period the company employed 1255 people.

HANSA Armaturen GmbH
P. O. BOX 81 02 40
D-70519 Stuttgart
Sigmaringer Strasse 107
D-70567 Stuttgart
Tel.: +49 711 16 14 0
Fax: +49 711 16 14 368
info@hansa.de
www.hansa.com



943541D-12-25